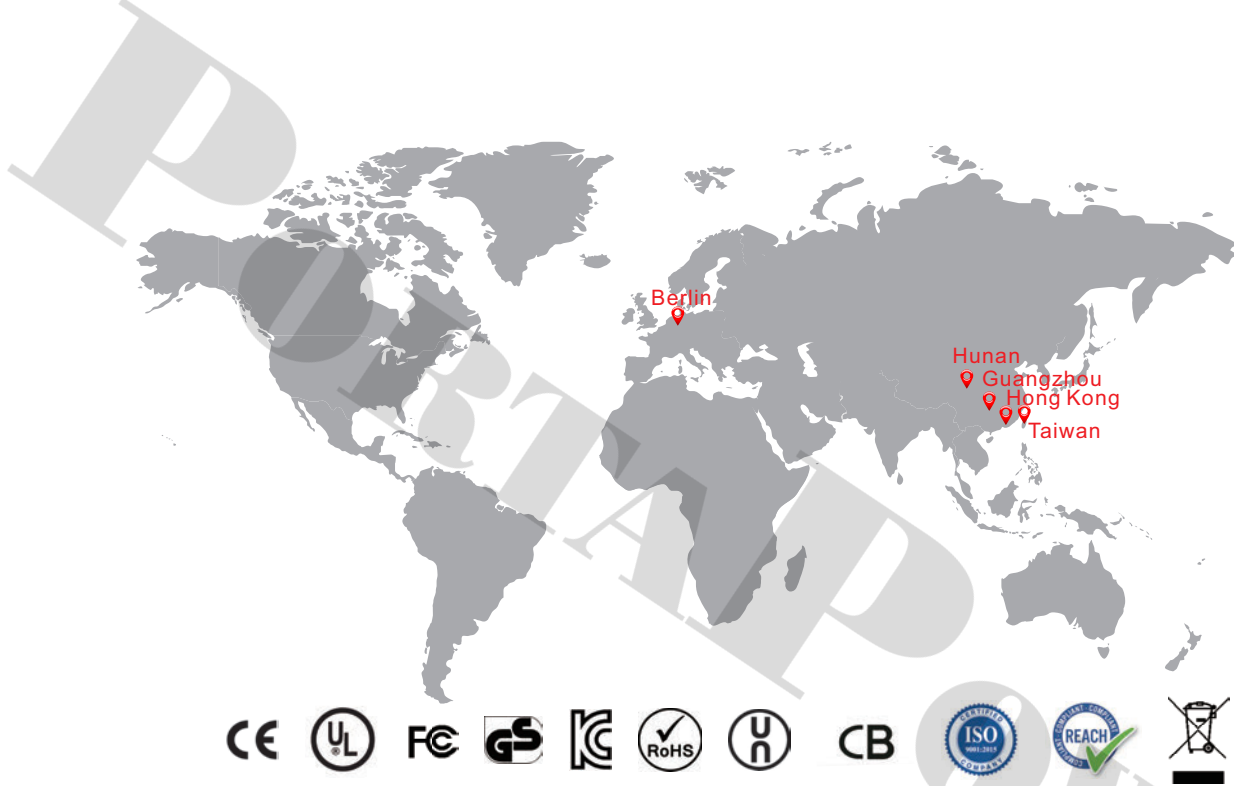


**POWER TO  
THE PORTABLE**

# **PORTALPOWER**

[www.portapower.com](http://www.portapower.com)

**2024  
Products  
Catalog**



PortaPower was founded in Hong Kong in 1995 with a mission of manufacturing and marketing high quality rechargeable batteries and related products for customers worldwide. With branches established in China and Germany, we are able to integrate R&D design, sales and services to satisfy both diverse and specific consumer needs globally. Given our highly efficient production and assembly lines and experienced R&D team, PortaPower continues to stay in the forefront of rechargeable battery technology, while constantly advancing our engineering and manufacturing capabilities to open new frontiers in the energy field.



**P03**

Cordless Power Tool  
Battery Packs



**P11**

Household Items & Gargen Tool  
Battery Packs



**P13**

Cordless Power Tool Chargers



**P14**

Battery Cells



**P19**

E-Bike Wheelchair  
Battery Packs & Chargers

# CONTENTS



**P38**

External Batteries



**P37**

Type-C Rechargeable  
Lithium Battery



**P34**

Digital Camera & Video Camcorder  
Battery Packs & Chargers



**P33**

Universal Laptop AC &  
Type C Adapters



**P27**

Diversified Laptop Computer  
Batteries

## CORDLESS POWER TOOLS BATTERY PACKS

We provide compatible power tool battery packs for a wide range of brands available in the market, such as Makita, Milwaukee, Worx, DeWalt, Bosch, Ryobi, Paslode, Panasonic, Hitachi, AEG, Black & Decker, Craftsman, Firestorm, Festool, and National & Skil, etc.

### AEG



Voltage: 12V  
Capacity: 3000~5000mAh



Voltage: 18V  
Capacity: 2800~4000mAh



Voltage: 2.4V  
Capacity: 1300~3300mAh



Voltage: 12V  
Capacity: 1300~3300mAh



Voltage: 14.4V  
Capacity: 1700~2500mAh



Voltage: 18V  
Capacity: 1300~3300mAh

### HILTI



Voltage: 14.4V  
Capacity: 3000~4000mAh



Voltage: 14.4V  
Capacity: 3000~4000mAh



Voltage: 21.6V  
Capacity: 3000~4000mAh



Voltage: 36V  
Capacity: 4500~6000mAh



Voltage: 24V  
Capacity: 1900~2500mAh

\*All brands, trademarks and registered trademarks are the property of their respective holders.

\*\* Yellow: NI-MH type batteries Green: Li-ion type batteries

*PortaPower design features:*

- \* Designed with cell voltage monitoring mechanism.*
- \* Built-in protection IC and NTC to stop battery from being over-charged.*
- \* Explosion avoided.*

**HITACHI**



Voltage: 36V  
Capacity: 2700~4000mAh



Voltage: 25.2V  
Capacity: 3000~3900mAh



Voltage: 18V  
Capacity: 3000~4000mAh



Voltage: 18V  
Capacity: 3000~4000mAh



Voltage: 14.4V  
Capacity: 1500~2000mAh



Voltage: 24V  
Capacity: 1300~3300mAh



Voltage: 18V  
Capacity: 1300~3000mAh



Voltage: 14.4V  
Capacity: 1500~2400mAh



Voltage: 12V  
Capacity: 1200~2000mAh



Voltage: 9.6V  
Capacity: 1200~2000mAh

\*All brands, trademarks and registered trademarks are the property of their respective holders.

\*\* Yellow: NI-MH type batteries Green: Li-ion type batteries

**Makita**



Voltage: 36V  
Capacity: 2600~3000mAh



Voltage: 18V  
Capacity: 3000~4000mAh



Voltage: 14.4V  
Capacity: 1100~2100mAh



Voltage: 10.8V  
Capacity: 1500~2000mAh



Voltage: 10.8V  
Capacity: 1500~2500mAh



Voltage: 7.2V  
Capacity: 1100~2100mAh



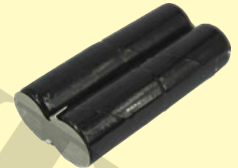
Voltage: 24V  
Capacity: 3200~3300mAh



Voltage: 14.4V  
Capacity: 3200~3300mAh



Voltage: 12V  
Capacity: 3200~3300mAh



Voltage: 4.8V  
Capacity: 1300~2500mAh

\*All brands, trademarks and registered trademarks are the property of their respective holders.

\*\* Yellow: NI-MH type batteries    Green: Li-ion type batteries



Voltage: 40V  
Capacity: 1500~2000mAh



Voltage: 20V  
Capacity: 3000~4900mAh



Voltage: 18V  
Capacity: 1500~2000mAh



Voltage: 14.4V  
Capacity: 1100~2100mAh



Voltage: 12V  
Capacity: 1400~2000mAh



Voltage: 24V  
Capacity: 1300~3300mAh



Voltage: 18V  
Capacity: 1300~3300mAh



Voltage: 14.4V  
Capacity: 1200~2000mAh



Voltage: 12V  
Capacity: 1200~2000mAh



Voltage: 9.6V  
Capacity: 1200~2000mAh

\*All brands, trademarks and registered trademarks are the property of their respective holders.

\*\* Yellow: NI-MH type batteries    Green: Li-ion type batteries

7

**RYOBI**



Voltage: 18V  
Capacity: 1100~2100mAh



Voltage: 18V  
Capacity: 4000mAh



Voltage: 14.4V  
Capacity: 1500~2000mAh



Voltage: 14.4V  
Capacity: 1500~2000mAh



Voltage: 12V  
Capacity: 1500~2000mAh



Voltage: 10.8V  
Capacity: 1500~2000mAh

**WORX**



Voltage: 40V  
Capacity: 3000~4000mAh



Voltage: 18V  
Capacity: 1500~2000mAh



Voltage: 18V  
Capacity: 3000~4000mAh



Voltage: 12V  
Capacity: 1500~2000mAh

\*All brands, trademarks and registered trademarks are the property of their respective holders.

\*\* Yellow: NI-MH type batteries    Green: Li-ion type batteries





Voltage: 28V  
Capacity: 3000~4000mAh



Voltage: 18V  
Capacity: 6000~7500mAh



Voltage: 18V  
Capacity: 3000~4000mAh



Voltage: 12V  
Capacity: 1400~2000mAh



Voltage: 14.4V  
Capacity: 1500~2400mAh



Voltage: 12V  
Capacity: 1300~3300mAh



Voltage: 12V  
Capacity: 1200~2000mAh



Voltage: 9.6V  
Capacity: 1300~3300mAh



Voltage: 2.4V  
Capacity: 1500~2000mAh

\*All brands, trademarks and registered trademarks are the property of their respective holders.

\*\* Yellow: NI-MH type batteries Green: Li-ion type batteries

**DEWALT**

Voltage: 20V  
Capacity: 6000~7500mAh



Voltage: 18V  
Capacity: 3000~4000mAh



Voltage: 14.4V  
Capacity: 3000~4000mAh



Voltage: 24V  
Capacity: 1300~3300mAh



Voltage: 18V  
Capacity: 1300~3300mAh



Voltage: 14.4V  
Capacity: 1300~3300mAh



Voltage: 12V  
Capacity: 1300~3300mAh



Voltage: 9.6V  
Capacity: 1300~3300mAh



Voltage: 7.2V  
Capacity: 1500~3300mAh


\*All brands, trademarks and registered trademarks are the property of their respective holders.

\*\* Yellow: NI-MH type batteries    Green: Li-ion type batteries

# CRAFTSMAN



Voltage: 20V  
Capacity: 2800~4000mAh



Voltage: 19.2V  
Capacity: 3000~4000mAh



Voltage: 18V  
Capacity: 1300~3300mAh



Voltage: 18V  
Capacity: 1300~3300mAh



Voltage: 14.4V  
Capacity: 1300~3300mAh



Voltage: 12V  
Capacity: 1300~3300mAh



Voltage: 12V  
Capacity: 1300~3300mAh



Voltage: 9.6V  
Capacity: 1300~3300mAh



Voltage: 7.2V  
Capacity: 1300~3300mAh

\*All brands, trademarks and registered trademarks are the property of their respective holders.

\*\* Yellow: NI-MH type batteries    Green: Li-ion type batteries

## HOUSEHOLD ITEMS & GARGEN TOOL BATTERY PACKS

**dyson**



Fit model: Dyson DC16  
Voltage: 21.6V  
Capacity: 2000mAh



Fit model: Dyson V6  
Voltage: 21.6V  
Capacity: 3300mAh



Fit model: Dyson V7  
Voltage: 21.6V  
Capacity: 2500mAh



Fit model: Dyson V8  
Voltage: 21.6V  
Capacity: 4000mAh



Fit model: Dyson V8  
Voltage: 21.6V  
Capacity: 5000mAh



Fit model: Dyson V10  
Voltage: 25.2V  
Capacity: 3000mAh

**NEW**



Fit model: Dyson V11  
Voltage: 25.2V  
Capacity: 3900mAh

**Robot**



Fit model: Roomba 440  
Voltage: 14.4V  
Capacity: 3300mAh



Fit model: Roomba 500 / 600 / 700  
Voltage: 14.4V  
Capacity: 3300mAh

**indream®**



Fit model: Indream 9700 / 9300 / 9200  
Voltage: 14.4V  
Capacity: 3300mAh

\*All brands, trademarks and registered trademarks are the property of their respective holders.

*More capacity Selections available*



Fit model: XV15  
Voltage: 21.6V  
Capacity: 3300mAh



Fit model: 80  
Voltage: 7.2V  
Capacity: 3000mAh



Fit model: G40LM35 Cordless  
Voltage: 36V  
Capacity: 2500mAh



Fit model: G40LM41 Cordless  
Voltage: 36V  
Capacity: 5000mAh



Fit model: Accu ComfortCut Li-18/23R  
Voltage: 18V  
Capacity: 2500mAh



Fit model: Gardena 124562 / Mahroboter R45Li  
Voltage: 18V  
Capacity: 2500mAh

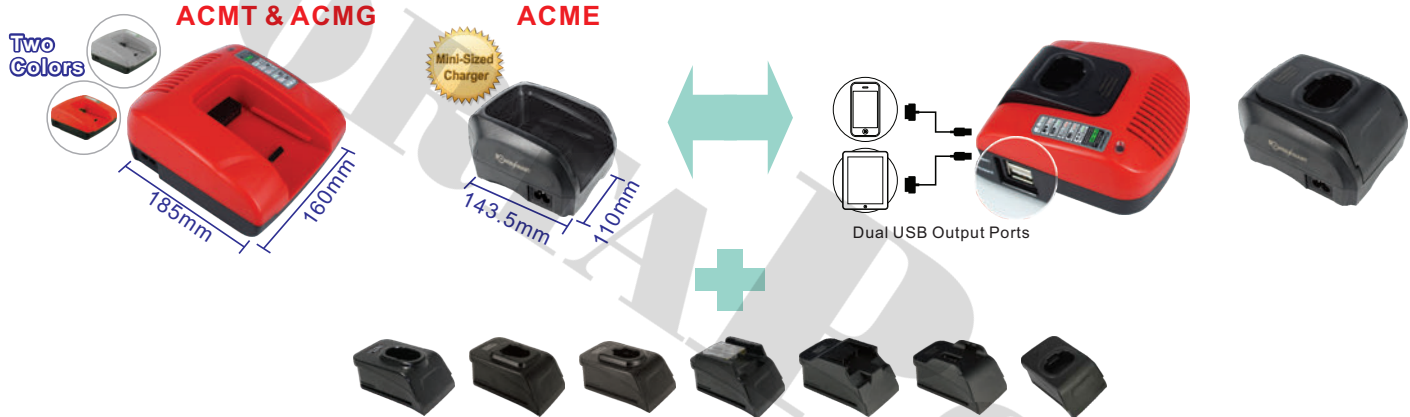


Fit model: Smart Sileno City9676473-03  
Voltage: 18.5V  
Capacity: 3400mAh

\*All brands, trademarks and registered trademarks are the property of their respective holders.

## CORDLESS POWER TOOL CHARGERS

Fit for both Ni-Cd / Ni-MH & Li-ion Power Tool Batteries



We provide a broad range of interchangeable charger plates  
Over 95% power tool battery charger plates available

### Specifications :

Model	ACMT	ACMG	ACME
Input	100-240V / 1.2A Max.		
Output	7.2V - 25V / 3A Max.	21.6V - 36V / 2.1A Max.	7.2V - 18V / 1.5A Max.

- \* Fit for Ni-Cd/Ni-MH & Li-ion Power Tool Batteries
- \* Interchangeable plates to suit different battery models, simply change the charger plates
- \* Cover 90% Power Tool battery models

## BATTERY CELLS

YLK LIK ENERGY (YLE) - a subsidiary of PortaPower Group



Model: INR16300A75 A  
Chemistry: Li-NMC  
Nominal Voltage: 3.6V  
Typical Capacity: 750 mAh  
Continuous Current: 2.5A



Model: NCR18350A140 A  
Chemistry: Li-NMC  
Nominal Voltage: 3.6V  
Typical Capacity: 1400 mAh  
Continuous Current: 3A



Model: NCR14500A125 A  
Chemistry: Li-NMC  
Nominal Voltage: 3.6V  
Typical Capacity: 1250 mAh  
Continuous Current: 2.5A



Model: NCR18350D125 DT  
Chemistry: Li-NMC  
Nominal Voltage: 3.6V  
Typical Capacity: 1250 mAh  
Continuous Current: 3A



Model: NCR14430A115 A  
Chemistry: Li-NMC  
Nominal Voltage: 3.6V  
Typical Capacity: 1150 mAh  
Continuous Current: 2.5A



Model: NCR18500A240 A  
Chemistry: Li-NMC  
Nominal Voltage: 3.6V  
Typical Capacity: 2400 mAh  
Continuous Current: 5A

*YLE manufactures high quality Li-NMC cells which can be used in the making of battery packs for eBikes, LED Lightings, Household Appliances and many other devices.*

### Battery cells of different capacity available



Model: INR18650D260 D  
Chemistry: Li-NMC  
Nominal Voltage: 3.6V  
Typical Capacity: 2600 mAh  
Continuous Current: 10A



Model: NCR18650D290 D  
Chemistry: Li-NCA  
Nominal Voltage: 3.6V  
Typical Capacity: 2900 mAh  
Continuous Current: 10A



Model: NCR18650D320 D  
Chemistry: Li-NCA  
Nominal Voltage: 3.6V  
Typical Capacity: 3200 mAh  
Continuous Current: 10A



Model: NCR18650A300 A  
Chemistry: Li-NCA  
Nominal Voltage: 3.6V  
Typical Capacity: 3000 mAh  
Continuous Current: 6A



Model: NCR18650A335 A  
Chemistry: Li-NCA  
Nominal Voltage: 3.6V  
Typical Capacity: 3350 mAh  
Continuous Current: 6A



Model: NCR18650D350 D  
Chemistry: Li-NCA  
Nominal Voltage: 3.6V  
Typical Capacity: 3450 mAh  
Continuous Current: 10A





Model: INR18650D250 G6  
Chemistry: Li-NMC  
Nominal Voltage: 3.6V  
Typical Capacity: 2500mAh  
Continuous Current: 22A



Model: NCR18650 36 D3  
Chemistry: Li-NMC  
Nominal Voltage: 3.6V  
Typical Capacity: 3600mAh  
Continuous Current: 10A



Model: IFR26650D420 D  
Chemistry: Li-NMC  
Nominal Voltage: 3.2V  
Typical Capacity: 4200mAh  
Continuous Current: 8A



Model: NCR18650A320 A  
Chemistry: Li-NMC  
Nominal Voltage: 3.6V  
Typical Capacity: 3200mAh  
Continuous Current: 6A



Model: NCR26650D600 DT  
Chemistry: Li-NMC  
Nominal Voltage: 3.6V  
Typical Capacity: 6000mAh  
Continuous Current: 10A



Model: NCR21700D500 DT  
Chemistry: Li-NMC  
Nominal Voltage: 3.6V  
Typical Capacity: 5000mAh  
Continuous Current: 10A

## JAPAN and KOREA Cells

*We are the Authorized Assembler of Samsung high power consumption battery packs.*



Model: ICR18650-26J M  
Chemistry: Li-ion  
Nominal Voltage: 3.6V  
Typical Capacity: 2600mAh  
Continuous Current: 5.2A



Model: INR18650-30Q  
Chemistry: Li-ion  
Nominal Voltage: 3.6V  
Typical Capacity: 3000mAh  
Continuous Current: 6A



Model: INR18650-35E  
Chemistry: Li-ion  
Nominal Voltage: 3.6V  
Typical Capacity: 3350mAh  
Continuous Current: 8A



Model: INR21700-50E  
Chemistry: Li-ion  
Nominal Voltage: 3.6V  
Typical Capacity: 4900mAh  
Continuous Current: 9.8A

*We are the Authorized Assembler of Panasonic high power consumption battery packs.*



Model: UR18650AA  
Chemistry: Li-ion  
Nominal Voltage: 3.6V  
Typical Capacity: 2250mAh  
Continuous Current: 5A



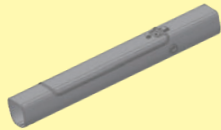
Model: NCR18650GA  
Chemistry: Li-NCA  
Nominal Voltage: 3.6V  
Typical Capacity: 3450mAh  
Continuous Current: 10A



Model: NCR18650BD  
Chemistry: Li-NCA  
Nominal Voltage: 3.6V  
Typical Capacity: 3180mAh  
Continuous Current: 10A

## E-BIKE WHEELCHAIR BATTERY PACKS & CHARGERS

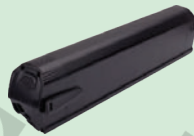
### In-frame



Antelope I YL-TLY1



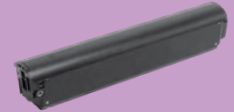
Black Warrior I YL-TXW1



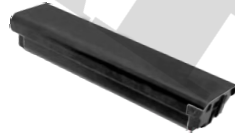
Dragon I YL-TSL1



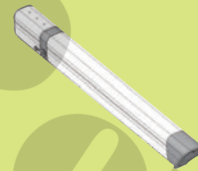
Electric Eel I YL-TDM1



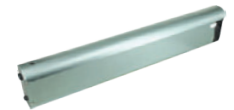
Eagle I YL-THY1



Lion I YL-TXS1



Fireflies II YL-TYH2



Phoenix I YL-TFH1



Pacific I YL-TTP1



Panther I YL-THB1



Unicorn I YL-TDJ1



Rosefinch I YL-TZQ1



Sword I YL-TBJ1

*\*Our e-bike battery packs are in compliance with EN15194 & EN ISO 13849-1*

### **In-frame**



Unicorn I YL-TDJ1



White Tiger I YL-TBH1



Wolf I YL-THL1



Blade I SS-TLR1



Sea Lion I SS-THS1



South Pacific I SS-TNY1



Sony I SS-TSN1



EEL-Pro I RE-TMY1P



Rapier I RE-TLJ1



Razer I YL-TLS1



Scimitar I RE-TBY1



Dolphin II SY-THT2



Tian Ma I HY-TTM1



### Down Tube



Grasshopper I YL-DCM1



Wasp I YL-DHF1



Tiger Shark I RE-DHS1



Haier I SS-DHE1



Hailong I SS-DHL1



Sea Moon I SS-DHY1



Sharp I SS-DXP1



### Rear Carrier



Blizzard I YL-CFX1



Blue Sky I YL-CLT1



Breeze I YL-CWF1



Lightning I YL-CSD1



Matsushita II YL-CSX2



Thunderstorm I YL-CLY1



White Cloud I YL-CBY1



Dolphin I SS-CHD1



Hai Tian I SS-CHT1



Hai Ying IV SS-CHY4



Apollo I KN-CAP1

### Multi-fit

### Seat Post





### Water Bottle



Dragonfly I YL-WXQ1



Scarab I YL-WJG1



Sky Bull I YL-WTN1



Train II SS-WDC2



Cuttle-1C RE-WHT1C



Extra Space for controller

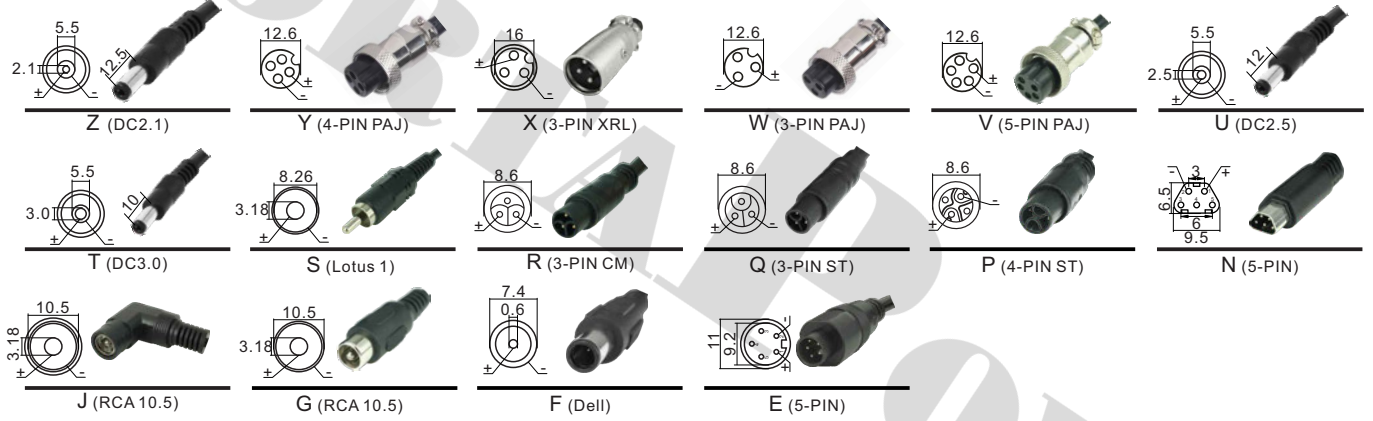


**Specifications: Choice of 7 different input plugs for AC chargers**

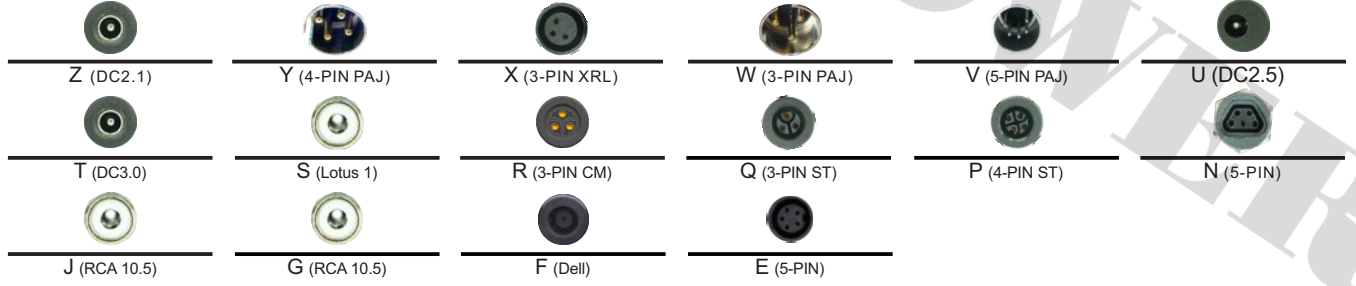


American Type    Australian Type    British Type    European Type    Israel Type    Japanese Type    Switzerland Type

**Specifications: Choice of 7 different DC output plugs**



**DC SOCKET OF Battery Packs**



**60W Charger**

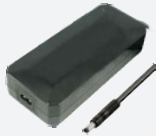
Model	CPF061015
Battery Voltage	36V
AC Input	100 - 240V
Frequency	50Hz / 60Hz
DC Output	42.0V
Charging Current	Max. 1.5A
Dimensions	110.5 (L) x 55 (W) x 32 (H)mm
Certifications	CE, FCC

**80W Charger**

Model	CPF081020	CMM081020
Battery Voltage	36V	36V
AC Input	100 - 240V	100 - 240V
Frequency	50Hz / 60Hz	50Hz / 60Hz
DC Output	42.0V	42.0V
Charging Current	Max. 2.0A	Max. 2.0A
Dimensions	141(L) x 61 (W) x 34.5 (H)mm	147(L) x 65.5 (W) x 34.2 (H)mm
Certifications	CE, FCC, ERP, RoHs, REACH	CE, FCC, RoHs, KC, GS, RCM, UL, CB, PSE

**130W Charger**

Model	CPN131030
Battery Voltage	36V
AC Input	100 - 240V
Frequency	50Hz / 60Hz
DC Output	42.0V
Charging Current	Max. 3.0A
Dimensions	174 (L) x 83 (W) x 36.3 (H)mm
Certifications	CE, CB, FCC

**160W Charger**

Model	CPF161040	CPF161330
Battery Voltage	36V	48V
AC Input	100 - 240V	100 - 240V
Frequency	50Hz / 60Hz	50Hz / 60Hz
DC Output	42.0V	54.6V
Charging Current	Max. 4.0A	Max. 3.0A
Dimensions	182 (L) x 79 (W) x 42 (H)mm	
Certifications	CE, FCC, ERP, RoHs, REACH	

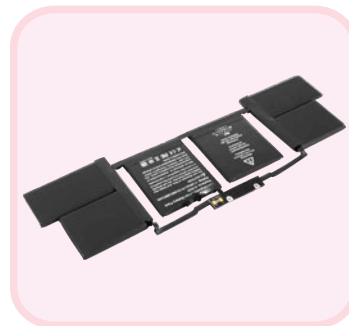
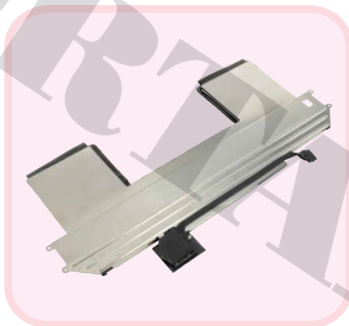
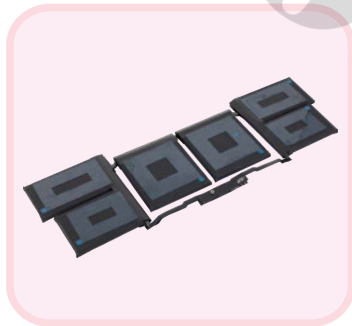
**250W Charger**

Model	CPN251060
Battery Voltage	36V
AC Input	100 - 240V
Frequency	50Hz / 60Hz
DC Output	42.0V
Charging Current	Max. 6.0A
Dimensions	196 (L) x 99 (W) x 40.5 (H)mm
Certifications	CE, CB, FCC

**300W Charger**

Model	CPC301070
Battery Voltage	36V
AC Input	100 - 240V
Frequency	50Hz / 60Hz
DC Output	42.0V
Charging Current	Max. 7.0A
Dimensions	185 (L) x 90 (W) x 42.5 (H)mm
Certifications	CE, FCC

## DIVERSIFIED LAPTOP COMPUTER BATTERIES

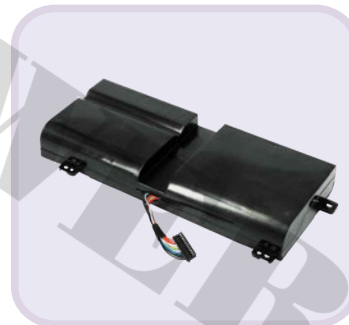
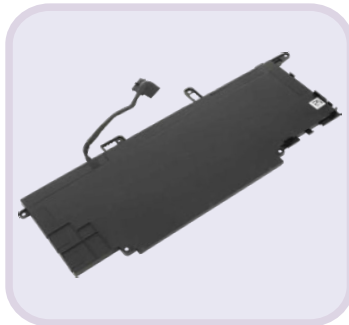
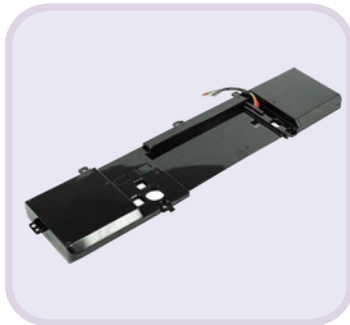
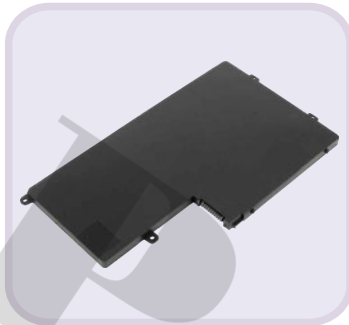
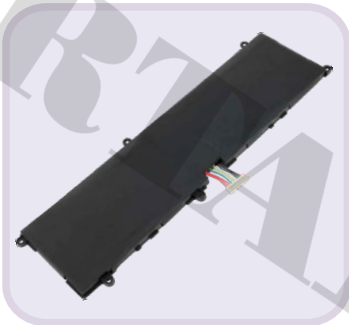


ASUS®



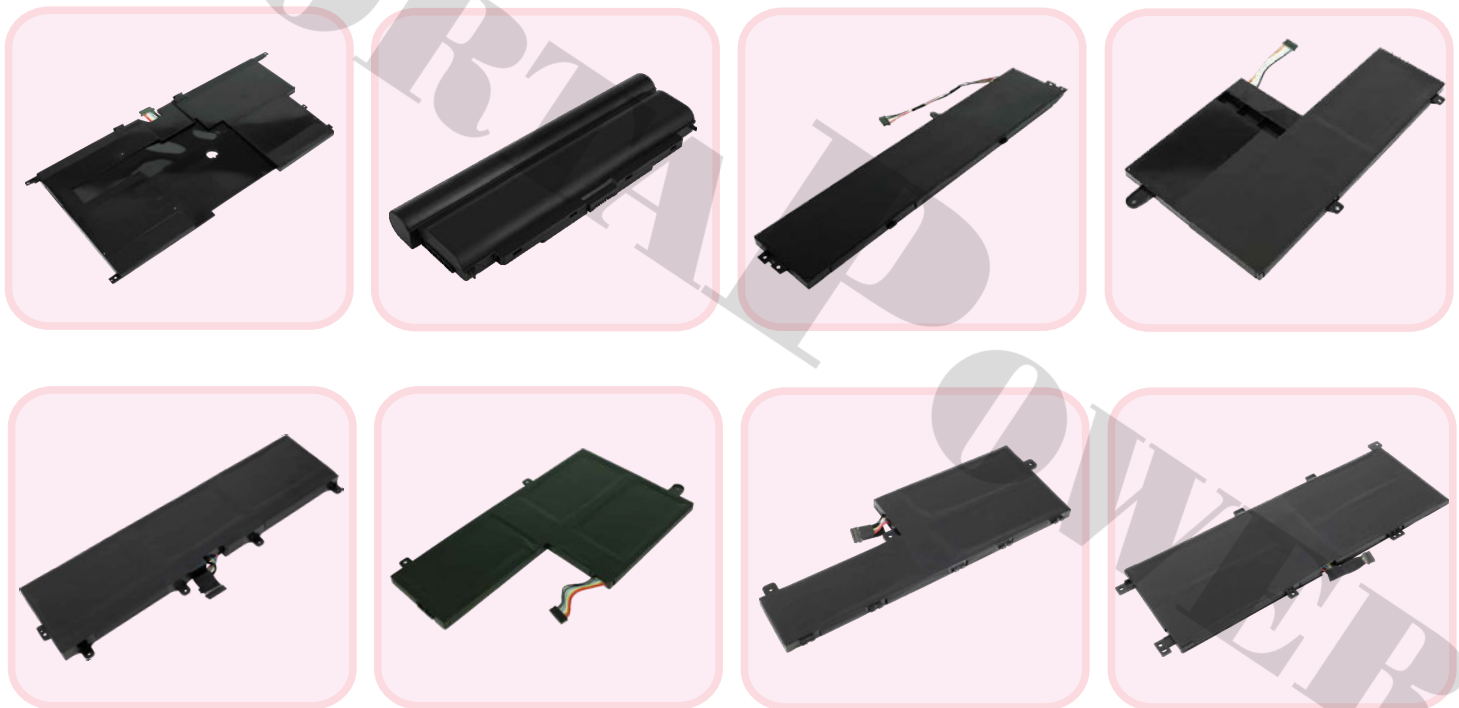
\*All brands, trademarks and registered trademarks are the property of their respective holders.

*We provide choices for a broad range of brands: Acer, Apple, Asus, Dell, LG, Compaq, Fujitsu, Gateway, Sony, Lenovo, Samsung, MSI, Panasonic, Toshiba, HP, and IBM, etc.*



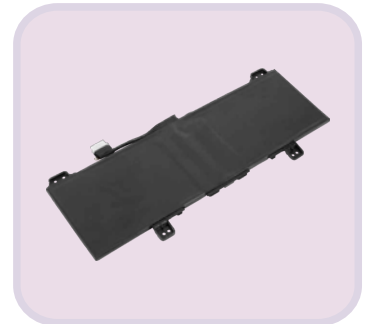
\*All brands, trademarks and registered trademarks are the property of their respective holders.

*lenovo*



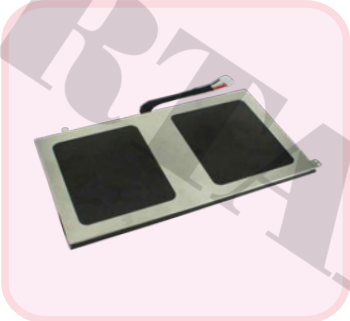
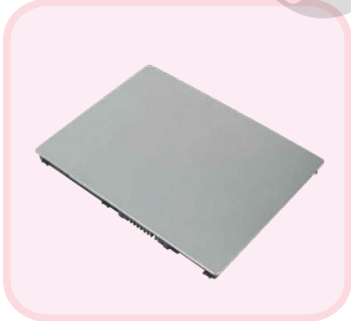
\*All brands, trademarks and registered trademarks are the property of their respective holders.

We provide choices for a broad range of brands: Acer, Apple, Asus, Dell, LG, Compaq, Fujitsu, Gateway, Sony, Lenovo, Samsung, MSI, Panasonic, Toshiba, HP, and IBM, etc.

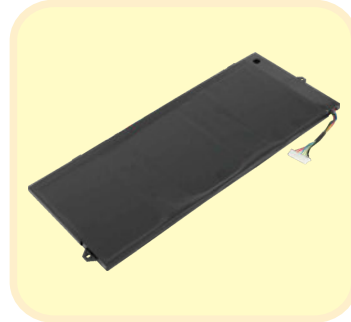


\*All brands, trademarks and registered trademarks are the property of their respective holders.

**FUJITSU**



**acer**



**TOSHIBA**

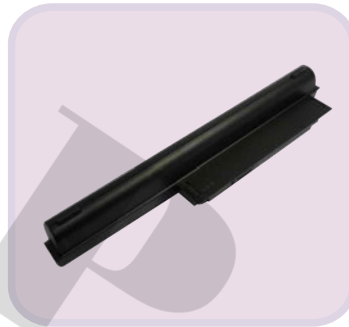
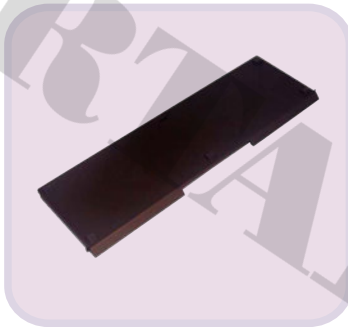


\*All brands, trademarks and registered trademarks are the property of their respective holders.



We provide choices for a broad range of brands: Acer, Apple, Asus, Dell, LG, Compaq, Fujitsu, Gateway, Sony, Lenovo, Samsung, MSI, Panasonic, Toshiba, HP, and IBM, etc.

**SONY**



**Panasonic**  
ideas for life



 **LG**



**DURACELL**



\*All brands, trademarks and registered trademarks are the property of their respective holders.

## UNIVERSAL LAPTOP AC & TYPE C ADAPTERS

### AC Adapter

We provide 38 kinds of Interchangeable connector tip for customers to choose with.  
 - Select a suitable connector tip and fit into the laptop DC-in jack tightly and steadily.  
 Then connect the DC output of the Power Adapters.



Tip for MacBook



**19V / 4.74A**  
**90W**



58.5 x 34.5 x 134mm

**16V / 4.06A**  
**65W**



95.4 x 42.3 x 30.4mm

**19V / 2.36A**  
**45W**



90.6 x 35.0 x 26mm

### Type C Adapter 60W USB-C PD3.0 Charger



American



European



Australian



British

**Input: 100 - 240V / Max 1.3A**  
**Output: 5 - 20V / Max.1.2A**

# DIGITAL CAMERA & VIDEO CAMCORDER BATTERY PACKS & CHARGERS

## BATTERY PACKS



Fit model: **SONY**  
Voltage: 3.6V  
Capacity: 950mAh



Fit model: **Panasonic**  
Voltage: 7.2V  
Capacity: 2250mAh



Fit model: **Canon**  
Voltage: 7.4V  
Capacity: 1600mAh



Fit model: **Nikon**  
Voltage: 7.6V  
Capacity: 1350mAh



Fit model: **Fujifilm**  
Voltage: 7.2V  
Capacity: 2250mAh



Fit model: **GoPro**  
Voltage: 3.85V  
Capacity: 1720mAh



Fit model: **JVC**  
Voltage: 7.2V  
Capacity: 800mAh



Fit model: **Insta360**  
Voltage: 3.8V  
Capacity: 1200mAh



Fit model: **LEICA**  
Voltage: 3.7V  
Capacity: 1800,  
1950mAh



Fit model: **SJ CAM**  
Voltage: 3.7V  
Capacity: 900, 950mAh



Fit model: **DJI**  
Voltage: 3.85V  
Capacity: 1300mAh

\*All brands, trademarks and registered trademarks are the property of their respective holders.

## CHARGERS



### Package includes



Charger  
Base



Charger  
Plate



USB Power  
Cable

### AVET Series For 7.2~8.4V

#### Specifications:

Input: DC 5V / 1A

Output: DC 8.4V / 1A

Dimension: 86 x 49 x 24mm

### USB Dual Charge

#### Specifications:

Input: DC 5V / 1-2A

Output: DC 4.2V / 8.4V 0.6A\*2

Dimension: 85 x 54 x 23mm

#### USB Charger For

Canon LP-E10, Fuji VP-W126, Nikon EN-EL15,  
Sony NP-FZ100, Sony NP-FW50, Sony NP-BX1



### AVEQ Series For 3.6~4.2V

#### Specifications:

Input: DC 5V / 1A

Output: DC 4.2V / 1A

Dimension: 79 x 47 x 22mm

**Convenient Design**  
Automatic Positive (+) and Negative (-)  
Fit for different battery sizes



#### Features

- Slim & Portable Size
- Powered by USB port
- Interchangeable Charger Plates



\*All brands, trademarks and registered trademarks are the property of their respective holders.

## CHARGERS

### AVMP Series

#### Specifications:

Input:  
100 - 240V; 50 / 60Hz  
Output:  
DC 12V / 1A  
Charger DC Output:  
DC 4.2V / 8.4V  
Dimensions:  
106 x 68 x 35mm



#### Features

- Interchangeable Charger Plates
- Charger come with 2 power adaptors, allow you to charge your battery at home or in car
- Select 1 of 4 optional AC power Adaptors

### ACMPB Series

#### Specifications:

Input:  
100 - 240V; 50 / 60Hz  
Output:  
DC 4.2V / 8.4V  
Dimensions:  
80 x 48 x 28mm



#### Features

- Direct plug into the wall outlet
- Interchangeable Charger Plates
- Interchangeable Adaptor Plates, design for worldwide applications

### ACMPB03

#### Specifications:

Input:  
100 - 240V; 50 / 60Hz  
Output:  
DC 4.2V / 8.4V  
550-650mA  
Dimensions:  
80 x 50 x 31mm



AC Power Adapter



\*All brands, trademarks and registered trademarks are the property of their respective holders.

## TYPE-C RECHARGEABLE LITHIUM BATTERY

In 2024, USB-C ports will become mandatory for a whole range of electronic devices, PortaPower introduces a range of rechargeable batteries with Type-C charging to replace the Alkaline and Ni-MH common-size batteries.



Compatible CR123  
3.6V 850mAh



Compatible CR123  
3V 950mAh



Compatible AAA  
1.5V 1100mAh



Compatible AA  
1.5V 4000mAh



Compatible C2  
1.5V 5000mAh



Compatible D1  
1.5V 5800mAh

### Wide range of uses



Shaver



Microphone



Remote Controller



Clock



Smart Door Lock



Toy



### Dedicated charger



- Portable charging
- LED charging indicator
- Three-in-one wisdom control chip

# EXTERNAL BATTERIES

## TRAVEL SERIES

Model EL1697 Max. 31500 mAh



### Specifications:

Model	EL1697	
Input	DC12V-24V	
Output	1	16V = 4A /
		19V = 3.5A /
		24V = 2.5A
		5V = 1A
2	3	5V = 2.1A
		10.8V = 5A
Size	177 x 110 x 23 mm	
Capacity	27000 mAh	
Cell	Panasonic NCR18650GA x 9	



4 Colors : Pink, Green, Blue & Gray

### Package Includes



Connectors for Laptop



Connectors for Mobile Phone



AC Adapter (19V / 45W)



Travel Bag

## PROFESSIONAL SERIES

Model EL1901 Max. 63000 mAh



Designed for Laptop

### Specifications:

Model	EL1901
Rated Input	DC 12-19V
Selectable Output	DC 16V or 19V 4.75A Max.
USB Output	DC 5V / 2A
Size	270 x 145 x 33 mm
Capacity	63000 mAh
Cell	Panasonic NCR18650GA x 18

\*All brands, trademarks and registered trademarks are the property of their respective holders.

*Automation — Mechanization — Informatization — Intelligence*

YOUR ENERGY SOLUTION PROVIDER

**HONG KONG HEADQUARTER:**

**PORTAPOWER (China) Limited**

Flat 1003, 10/F., Hopeful Factory Centre,  
10-16 Wo Shing St., Fotan, N.T., Hong Kong

Tel: (852) 2687 6323

Fax: (852) 2687 6312

**GUANGDDONG FACTORY:**

**Guangzhou Zhanhui Electronics Co., Ltd**

No. 320, Shinan Road, Guantan, Dongchong,  
Nansha District, Guangzhou, China, 511453

Tel: (86) 020-6680 4228

Fax: (86) 020-6680 4229

**HUNAN FACTORY:**

**Changde Yik Lik Energy Ltd.**

Anxiang County Industrial Area,  
Changde City, Hunan, China, 415600

Tel: (86) 0736-433 8338

Fax: (86) 0736-433 8333

**SERVICE CENTRE:**

**PORTAPOWER Service Center**

Alt-Kaulsdorf 18  
12621 Berlin, Germany

Tel: +49 (0)30 60985356

**TAIWAN FACTORY:**

**PORTAPOWER Electronics Ltd.**

1/F, No.79, Ln.271, Liancun Rd., Fengyuan Dist.,  
Taichung City, Taiwan (R.O.C), 420

Tel: +886-4 2539 3829

Fax: +886-4 2539 3829